

# ALTUS

## recessed aluminium extrusion



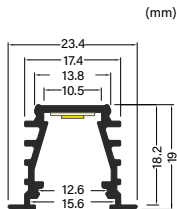
- mainly used in furniture or plasterboard
- continuous line of light (when using 120LEDs/m strip or more and white diffuser mounting spring available for wall or ceiling recess)
- angled profile sides are designed for better light reflection
- maximum LED strip width: 10 mm



## TALEA Extrusion

order extrusion, led strip insets and accessories separately

<b>Material</b>	Aluminum
<b>Material colour</b>	Sliver anodized
<b>Warranty</b>	3 years warranty



### EXTRUSION

Order code	L(mm)	Description
VR-18U-2M	2000	Sliver anodized extrusion

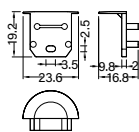
### DIFFUSER

Order code	L(mm)	Description
VR-SL15F-2M	2000	Slide frosted
VR-SL15W-2M	2000	Slide white
VR-CK13T-2M	2000	Click transparent
VR-CK13W-2M	2000	Click white
VR-LS13T-2M	2000	Lens transparent



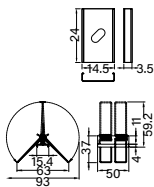
### END CAP

Order code	Description
VR-12V-ECS	End cap



### MOUNTING

Order code	Description
VR-16MP4	Mounting plate
VR-40QO-MS	Spring mounting plate



### CONNECTOR

Order code	Description
VR-18SJ3	Connector 180°

